

HOOSIER ENERGY REC, INC

**Requirements for Connection of Generation Facilities
to the HE Transmission System**

January 2009

Table of Contents

1.0 INTRODUCTION 1

2.0 TYPES OF CONNECTED CIRCUIT CONFIGURATIONS..... 6

3.0 DESIGN REQUIREMENTS FOR CONNECTION 6

4.0 REQUIREMENTS FOR OPERATION 10

5.0 PROTECTIVE RELAYING 13

6.0 TESTING AND MAINTENANCE..... 15

7.0 METERING AND TELEMETRY..... 16

8.0 COMMUNICATIONS 17

9.0 COSTS INCURRED 18

10.0 DESIGN REVIEW 19

11.0 INSPECTION REQUIREMENTS..... 21

12.0 FINAL DOCUMENTATION 21

13.0 APPROVAL 21

14.0 SPECIAL PROVISIONS..... 22

15.0 COORDINATION WITH OTHER CODES, STANDARDS, AND AGENCIES 22

16.0 INDEMNIFICATION 22

APPENDIX A:..... 23

Figures..... 23

APPENDIX B:..... 26

Generation Dynamic Performance Data..... 26

APPENDIX C:..... 29

HE Voltage Flicker Criteria and Harmonic Distortion Criteria..... 29

APPENDIX D:..... 36

Generation Abnormal Frequency Operating Allowance..... 36

APPENDIX E: 38

Notification of Intent to Install and Operate Generation Interconnected with the HE Transmission System..... 38

1.0 INTRODUCTION

Hoosier Energy REC, Inc., has prepared this document which outlines the minimum requirements for all generation facilities connecting to the HE Transmission System, or to transmission owned by others connected to and operated in the HE control area.

1.1 Background

In the present electric utility environment characterized by deregulation, open access to the transmission network, wholesale and retail competition, etc., there is wide recognition that electric system reliability, safety and quality of service are to be maintained. Maintaining reliability, safety and quality of service in this changing environment places additional challenges in the planning and operation of electric systems.

As a result of this new environment, there are an increasing number of requests to connect to and use the HE Transmission System. Each request is reviewed to identify the facility impacts and necessary system improvements on the HE system. These reviews ensure that comparable treatment is given to all users, and that reliability, safety, and quality of service are maintained.

The Hoosier Energy transmission system is, in effect, managed by the Midwest Independent System Operator (MISO). Any requests to connect generation to the Hoosier Energy system must be submitted to and approved by MISO, per MISO procedures.

1.2 Scope

This document informs entities seeking facility connections to the HE Transmission System of the generation connection requirements. The requirements are applicable to all facilities connecting to the HE Transmission System, both those owned by HE as well as facilities owned by other parties.

The scope of this document satisfies the NERC Planning Standards by identifying requirements for connections to the bulk transmission system at voltages generally 100 kV and above. This document also applies to connections to those systems designated as transmission facilities that are rated at lower voltages, which include 69 and 34.5kV. Requirements applicable for all types of generation facilities, regardless of generation capacity, are covered.

The minimum requirements pertaining to connected facilities are contained herein. Reliability concerns in particular are such that additional requirements may need to be imposed on connecting facilities based on their location within the system, facility power level and the associated impacts on HE's system performance. The need for additional requirements can only be evaluated once certain details of a proposed facility are made known and system impact studies have been conducted.

The requirements for initial facility connection apply equally to continued operation of existing connected facilities. Therefore, any upgrades, additions, enhancements, or changes of any kind to an existing connected facility are subject to HE review to ensure continued compliance with these requirements.

The scope of these documents is limited to the technical requirements for connected facility design and operation. **Generation Facility Owners** interested in the terms of transmission service should refer appropriate Midwest ISO Tariff documents.

1.3 Objectives

HE, in its role as a transmission provider, has prepared this document based on the following objectives:

- a) Maintain system reliability, personnel and equipment safety, and quality of service as new facilities are added to the transmission network and existing facilities are modified.
- b) Ensure comparability in the requirements imposed upon the various entities seeking to connect facilities to the transmission network.
- c) Satisfy compliance with NERC Standards FAC-001 and FAC-002 pertaining to documentation of facility connection requirements by those entities responsible for system reliability.
- d) Inform those entities that seek facility connections to the HE Transmission System of the various requirements for system reliability, safety of personnel and equipment, and quality of service.
- e) Facilitate uniform and compatible equipment specification, design, engineering, and installation practices to promote safety and uniformity of service.

1.4 Request for Interconnection to MISO

Under current MISO rules, and organization seeking to connect to the Hoosier Energy must request approval from MISO first. This involves submitting the appropriate information to the MISO "generation queue" for approval. The procedures for applying for MISO

approval are documented at the MISO website. This policy assumes the proposing entity has requested MISO approval

1.5 Rough Plan of Service

Following MISO approval, the entity proposing the interconnection, with approval of Hoosier Energy, will facilitate a system impact study (discussed in the following step by preparing a “rough” plan of service to provide information on proposed transformer and line loading and other high level information needed for the system impact study. This rough plan will be used later for the detailed plan, upon approval of the project by MISO following analysis of system impact.

1.6 System Impact Studies

In order to assess the impact of a proposed facility connection on system reliability, system impact studies need to be conducted. These system impact studies, as a minimum, examine the transmission line and transformer loading; voltage profiles and schedules; minimum reactive requirements; and power quality impacts of the proposed facility for a range of expected seasonal loading and power transfer conditions. The effect of the proposed facility on short circuit duties is examined for all proposed generation facilities and transmission connections. Stability performance is also assessed for all proposed generation facilities. A multi-step approach to the proposed facility may be considered where the impact of each step is assessed separately. Alternative plans of service may be considered. All requesters of generation connection service must petition Midwest Independent System Operator (MISO) for approval of the connection. MISO then performs any system impact studies needed for the interconnections at the owner’s cost. All generation connections above 100kV and selected interconnections (at MISO discretion) at 69kV will be evaluated by MISO. See MISO Procedures for details.

1.6.1 Power Flow Analyses

Power flow analyses are conducted to examine the impact of the proposed facility on nearby transmission line and transformer loading, and nearby voltage profiles. These analyses may typically determine the maximum generation that can be accommodated with minimal or no upgrades to the transmission system. Contingencies consisting of single or multiple outages of lines and/or transformers are considered in these analyses. Where the analyses indicate that transmission upgrades are necessary, alternative reinforcement plans may be devised and evaluated for their capability to accommodate the proposed facility. These analyses may also indicate a need to perform dynamic studies.

1.6.2 Short Circuit Analyses

Short circuit analyses are conducted to examine the impact of the proposed facility on equipment duties. Increased fault duties may require upgrading existing circuit breakers and other equipment.

1.6.3 Transient Stability Studies

The ability of a proposed generation facility to remain in synchronism with the transmission network during disturbances, including faults, is investigated here. As with load flow analyses, transient stability studies determine how much generation can be accommodated at a given location. Typically, disturbances corresponding to the contingencies examined in the load flow analyses are simulated. Other aspects of system dynamic performance affected by the proposed generation facility may be assessed. Any required remedial measures, transmission facility upgrades and/or additional design requirements for the proposed generation facility are identified.

The criteria HE uses to determine what constitutes acceptable performance in the above system impact studies is readily available from HE's FERC Form 715 filing.

1.5.4 Additional Analyses

Other analyses may be required as part of system impact studies depending on the nature of the proposed connected facility and its location within the transmission network. Power quality analyses are undertaken for all generation that could potentially cause harmonic current or voltage, voltage flicker, and/or telephone interference. Criteria for harmonic interference, voltage flicker, and telephone interference are included in the document appendices.

The scope of all the above system impact studies is determined by MISO based on the type, location, and power level of the proposed facility. Normally, MISO will perform the system impact studies at the expense of the **Owner**.¹ A report documenting the assumptions, results, and conclusions of the system impact studies is made available to the **Generation Facility Owner**.

HE and MISO must be notified of new facilities, upgrades, or additions such as an increase in load or added generating units to existing facilities connected to the transmission system within the HE Control Area. System impact studies are to be conducted to determine the need for any upgrades of transmission equipment or transmission reinforcements to the HE system to accommodate the changes in the connected facility.

1.7 Facility Connection Study

A facility connection study is performed to evaluate and determine the physical connection between the transmission system and a proposed connected facility. The

¹ Hereinafter the Owner refers to the Generation Facility Owner or third party acting on behalf of the Generation Facility Owner.

electrical configuration of the connection equipment including transformers, switchgear and other station equipment, and required transmission line sections are determined. Appendix A illustrates some of the more typical configurations for facility connections, but other possibilities exist depending on the particular situation. The physical layout of equipment and right-of-way needs are determined in the facility connection study as well. Typically, more than one alternative is considered in developing a facility connection depending upon the accessibility of the local area transmission facilities and the needs of the proposed connected facility. A multi-step approach may be considered in the facility connection study to accommodate a multistep increase in generation for the connected facility. Normally, the expense of developing a facility connection is the responsibility of the Generation Facility **Owner**.

1.8 Initiating a Facility Connection or Facility Change

The following table outlines the HE personnel to be contacted with regard to any request for a new facility connection or significant change to an existing connected facility. As noted above, requests for new generation or a significant changes to existing generation must be approved by MISO before HE takes action. Requests for transmission service to MISO should be made simultaneously with a connection request. The **Generation Facility Owner** is required to complete and forward a Notification of Intent to Install and Operate Generation (NIOG) to the HE contact with the appropriate deposit and all necessary attachments. See Section 10.

The table below summarizes the interface needed with HE by the entities seeking to connect their generation facilities to the HE Transmission System.

Type of Facility To be Connected	Service or Activity Required From HE	HE Contact
Generation	Initial Contact to Request Connection or Studies	Manager – Technical Assets

Following the initial contact regarding a proposed generation facility connection, when the generator’s proposed location and power level are established, a rough plan of service is prepared by HE and system impact studies are undertaken by MISO (in most cases) as needed. The information needed to develop a plan of service and to conduct the system impact studies should be provided to HE or MISO at this point. The system impact studies may, as noted above, identify additional requirements for reliability beyond the minimum requirements covered by this document.

HE approval of a proposed facility or facility change is contingent upon a design review of the proposed connected facility. Operation of a connected facility is also subject to continuing compliance with all applicable construction, maintenance, testing, protection, monitoring, and documentation requirements described herein, as well as the applicable NERC Planning Standards and RFC documents noted herein.

HE’s facility connection requirements are organized into two separate documents titled “Requirements for Connection of Non-Generation Facilities to the HE

Transmission System” covering end-user and transmission interconnection facilities, and “Requirements for Connection of Generation Facilities to the HE Transmission System” for generation. This is because many requirements applicable to generation do not apply to **Transmission End-User** or **Transmission Interconnection** facilities. Likewise, requirements applicable to **Transmission End-User** facilities and **Transmission Interconnections** do not always pertain to generation. However, when a proposed facility includes both generation and **Transmission End-User** or **Transmission Interconnection** facilities, the proposing entities will need to consult both documents.

1.9 Responsibilities

All Owners may be responsible for the costs associated with connecting to the HE Transmission System. This will include both the costs of the Owner’s facilities and all costs of modifications and/or additions to HE transmission facilities required to integrate the generation facilities. HE will also require reimbursement for evaluation of requests for service, for performing necessary System Impact Studies, and for required regulatory filings. These direct costs may also be increased to cover any increase in taxes in those jurisdictions where applicable. The information contained herein is subject to change and may be revised at any time.

2.0 TYPES OF CONNECTED CIRCUIT CONFIGURATIONS

The typical arrangement for generation connected to a transmission line is shown in Figure 1 of Appendix A, and the typical arrangement for generation connected to a breakered bus is shown in Figure 2 of Appendix A. These figures illustrate some acceptable configurations for connection of generation to the HE Transmission System.

This document is not intended to cover the connection of generation to distribution systems. For requirements applicable to distribution connected generation, the **Generation Facility Owner** should contact local HE member cooperatives.

3.0 DESIGN REQUIREMENTS FOR CONNECTION

The **Generation Facility Owner** is responsible for installing appropriate equipment and facilities so that the generation is compatible with the HE Transmission System. The Owner is also responsible for meeting any applicable federal, state, and local codes. The minimum HE Transmission System connection requirements for generation are as follows.

3.1 Generator Frequency

The Owner’s generating facility will provide a balanced, symmetrical, three phase interchange of electrical power with the HE Transmission System at a nominal frequency of 60 Hz.

3.2 System Protection

The **Generation Facility Owner** is responsible for providing adequate protection to HE facilities for conditions arising from the operation of generation under all HE

transmission system operating conditions. The **Owner** is also responsible for providing adequate protection to their facility under any HE transmission system operating condition whether or not their generation is in operation. Conditions may include but are not limited to:

1. single phasing of supply,
2. transmission system faults,
3. equipment failures,
4. abnormal voltage or frequency,
5. lightning and switching surges,
6. excessive harmonic voltages,
7. excessive negative sequence voltages,
8. separation from supply,
9. synchronizing generation,
10. resynchronizing the **Owner's** generation after electric restoration of the supply.

More complete relaying system requirements are identified in Section 5.0.

3.3 Interrupting Device

All **Generation Facility Owners** shall provide a three-phase circuit interrupting device with appropriate relaying systems (as stated in Section 5.0) to isolate the generation facilities from the HE supply for all faults, loss of HE supply, or abnormal operating conditions regardless of whether or not the **Owner's** generation is in operation.

This device shall be capable of interrupting the maximum available fault current at that location. The three-phase device shall interrupt all three phases simultaneously. The tripping control of the circuit interrupting device shall be powered independently of the utility ac source in order to permit operation upon loss of the HE transmission system connection.

The specific reclosing times for the **Generation Facility Owner's** circuit interrupting device will be provided by HE. It is the **Generation Facility Owner's** responsibility to design and maintain their interrupting device(s) to properly isolate generation upon loss of the HE connection until the appropriate HE facilities are returned to service.

3.4 System Grounding

The grounding of the **Generation Facility Owner's** system at the transmission voltage level will be considered on a case-by-case basis.

3.5 Voice Communication Circuit

The **Generation Facility Owner** may be required to establish a dedicated voice communication circuit to the HE System Control Center to permit coordination of the synchronization and operation of the generation.

3.6 Disconnecting Devices

A three phase air break switch or a three-pole single-throw disconnect switch shall be installed on each transmission line supply entrance to the Owner's facility be accessible at all times. The disconnecting device shall be mechanically lockable in the open position with an HE padlock in order to provide for a visible electric isolation of the Owner's facility and shall be identified with an HE designated equipment number.

3.7 Disturbance Monitoring

The **Generation Facility Owner's** system must have disturbance monitoring equipment per RFC Document PRC-002-RFC-01 (available at www.rfirst.org).

3.8 Transient Stability Performance

Transient stability performance of the generator is the responsibility of the **Generation Facility Owner**. Transient stability performance should be in accordance with HE Transient Stability Criteria. HE may, at its discretion, elect to perform the necessary studies to evaluate transient stability performance. The cost of these studies will be borne by the **Generation Facility Owner** as part of the System Impact Study.

3.9 Excitation Control

In addition to the normal excitation system and automatic voltage regulation equipment, the following controls are also required for each synchronous generator.

3.9.1 Reactive Compensation

A circuit should be provided in the automatic voltage regulator (AVR) to permit the control of voltage beyond the generator terminals. This is known as reactive line drop compensation. The point of control is to be adjustable over a range covering 0 to 15% reactance (on the generator base) beyond the generator terminals. HE's general practice is to regulate voltage at 6% back from the station bus (toward the generator).

3.9.2 Overcurrent Limiter

The excitation system is to be provided with a current limiting device which will supercede or act in conjunction with the AVR to automatically reduce excitation so that generator field current is maintained at the allowable limit in the event of sustained under-voltages on the transmission system. This device must not prevent the exciter from going to and remaining at the positive ceiling for 0.1 seconds following the inception of a fault on the power system.

3.9.3 Underexcitation Limiter

A limiter to prevent instability resulting from generator underexcitation is required.

3.9.4 Power System Stabilizer

HE studies may identify the need for the use of power system stabilizers, depending on the plant size, excitation system type and settings, facility location, area transmission system configuration and other factors. This will be determined on a case-by-case basis.

3.10 Speed Governing

All synchronous generators shall be equipped with speed governing capability. This governing capability shall be unhindered in its operation consistent with overall economic operation of the generation facility.

3.11 Dynamic Performance Data

Dynamic performance data shall be made available to HE as part of the facility specifications and plans for evaluation by HE. This data is required to evaluate the system dynamic performance of the generation facility which includes but is not limited to transient stability. See Appendix B.

3.12 Automatic Generation Control (AGC)

Depending upon various control area factors applicable to tie line and frequency regulation, provision for dispatch control of the generation facility by HE System Control Center AGC system may be required. This will be considered on a case by case basis and any provision for control by AGC should be included in a Connection Agreement between the **Generation Facility Owner** and HE.

3.13 Black Start Capability

Depending upon the geographic location and other considerations applicable to system restoration in the event of a blackout, the provision of blackstart capability may be required or desirable. A blackstart capable generation facility is one that can be started without the aid of off-site power supplied by the transmission system. The Connection Agreement is to address this matter. Responsibilities of the Generation Facility Owner will be addressed in the Connection Agreement.

3.14 Sub-Synchronous Torsional Interactions or Resonances

Depending upon the specific location of the generation facility in the transmission network, close electrical proximity to series compensated transmission lines or FACTS devices may result in undesirable or damaging sub-synchronous currents. Also, the provision of high speed reclosing following transmission line faults may result in excessive torsional duties. The **Generation Facility Owner** must provide HE with immunity from damaging torsional oscillations resulting from all HE transmission system operations, and insure the turbine-generator is not excited into resonance by normal system operations. The Connection Agreement shall address these matters.

3.15 Unbalanced Electric Conditions

3.15.1 Voltage Balance

All three-phase generation shall produce balanced 60 Hz voltages. Voltage unbalance attributable to the **Generation Facility Owner** combined generation and load shall not exceed 1.0% measured at the point-of-service. Voltage unbalance is defined as the maximum phase deviation from average as specified in ANSI C84.1, "American National Standard for Electric Power Systems and Equipment – Voltage Ratings, 60 Hertz."

3.15.2 Current Balance

Phase current unbalance attributable to the **Generation Facility Owner** combined generation and load shall not exceed that which would exist with balanced equipment in service, measured at the point-of-common coupling.

Situations where high unbalance in voltage and/or current originate from the transmission system are to be addressed in the Connection Agreement.

3.16 Harmonics and Flicker

The **Generation Facility Owner** shall take responsibility for limiting harmonic voltage and current distortion and/or voltage flicker² caused by their generation equipment. Limits for harmonic distortion (including inductive telephone influence factors) are consistent with those published in the latest issues of ANSI/IEEE 519, "Recommended Practices and Requirements for Harmonic Control in Electrical Power Systems." Specific HE harmonics and flicker criteria are given in Appendix C. HE criteria requires that flicker occurring at the point of compliance shall remain below the Border Line of Visibility curve on the IEEE/GE curve for fluctuations less than 1 per second or greater than 10 per second. However, in the range of 1 to 10 fluctuations per second, voltage flicker shall remain below 0.4% (see Appendix C, Exhibit 1). Depending upon the nature of the generation and its location, HE may require the installation of a monitoring system to permit ongoing assessment of compliance with these criteria. The monitoring system, if required, will be installed at the **Generation Facility Owner's** expense.

Situations where high harmonic voltages and/or currents originate from the transmission system are to be addressed in the Connection Agreement.

4.0 REQUIREMENTS FOR OPERATION

The **Generation Facility Owner** is responsible for operating their generation with full regard for the safe practices of, and with full cooperation under the supervision of, the HE System Control. A Generation Facility Owner's generation shall not supply power into the HE transmission system unless a specific written agreement has been made to supply power to the HE transmission system.

² Flicker is an objectionable, low frequency, voltage fluctuation which can be observed through changes in intensity or color of illumination.

Under no circumstances shall a **Generation Facility Owner** energize HE transmission facilities which have been de-energized. Circuits which are electrically disconnected from the HE transmission system and are energized by a **Generation Facility Owner** constitute a potential safety hazard for both HE transmission personnel and the general public. Also, the energizing of such circuits at abnormal voltage or frequency could cause damage to electrical equipment of both the HE transmission system and the generation.

HE reserves the right to disconnect service to any generator facility if, for any reason, HE deems the continuation of the generator is, or may be, a detriment to the operation of the HE Transmission System.

The minimum requirements for operation of generation on the HE Transmission System are contained herein.

4.1 Synchronization

The **Generation Facility Owner** shall assume all responsibility for properly synchronizing their generation for operation with the HE Transmission System. Upon loss of the HE supply, the **Generation Facility Owner** shall immediately and positively cause the generation to be separated from the HE system. Synchronizing of generation to the HE Transmission System may be, at HE's discretion, performed under the direction of the HE System Control Center.

4.2 Voltage Schedule/Power Factor

Specification of the generator voltage schedule will be determined under the direction of the HE System Control Center. See also NERC Standard VAR-002, B.R2 for details. A steady-state deviation from this schedule between +0.5% to -0.5% of the nominal voltage will be permissible. Nominal HE system voltages are 345, ~~230~~, 161, 138, and 69 kV.

In certain unusual situations where a voltage schedule is inappropriate, HE, initially and in the future, may substitute adherence to a specified voltage schedule with a specified power factor. A steady state deviation from this power factor within +2% to -2% will be permissible.

4.3 Voltage Range

The generation facility must be capable of continuous non-interrupted operation within a steady-state voltage range during system normal and single facility outage conditions. This range is from 92% to 105% of the nominal transmission voltage. HE system nominal voltages are as indicated in Section 4.2 above. During emergency and/or transient system conditions, as voltage may temporarily be outside the 92% to 105% range, all reasonable measures should be taken to avoid tripping of the generation facility due to high or low voltage.

4.4 Frequency Range

The generation facility must be capable of continuous, non-interrupted operation in the frequency range of 59.5 to 60.5 Hz. Limited time, non-interrupted operation is

also expected outside this frequency range in accordance with the generator manufacturer's recommendation or the figure contained in Appendix D.

4.5 Net Demonstrated Real and Reactive Capabilities

The Net Demonstrated real capability in accordance with ECAR Document No. 4, (to be superseded by RFC document MOD-024-RFC-01 in 2009) must be provided to HE annually. HE reserves the right to witness these tests. In addition, individual generators in the generation facility must make available the full steady-state over- and under-excited reactive capability given by the manufacturer's generator capability curve at any MW dispatch level. Tests which demonstrate this capability must be conducted and documented not more than at five year intervals in accordance with ECAR Document 4, (to be superseded by RFC document MOD-025-RFC-01 in 2009). Such documentation shall be provided to HE. HE reserves the right to witness these tests.

4.6 Other Applicable Operating Requirements

In order to assure the continued reliability of the HE Transmission System, the **Generation Facility Owner** may be requested to adhere to other operating requirements and/or encouraged to adopt common operating practices. These include the coordination of maintenance scheduling, performance not to exceed a specified forced outage rate, operations procedures during system emergencies, participation in control area operating reserves, provisions for backup fuel supply or storage, and provisions for emergency availability identified by the North American Electric Reliability Council.³ HE, as the Transmission Provider, may require the Generation Facility Owner to provide Interconnected Operation Services defined by NERC standards. Such requirements shall be addressed in the Connection Agreement with the **Generation Facility Owner**.

Conformance with applicable requirements in ECAR Documents, particularly Document 4, "Criteria and Methods for the Uniform Rating of Generation Equipment," (to be superseded by RFC document MOD-024 and MOD-025 in 2009), NERC Standard VAR-002, and RFC document PRC-002-RFC-1 "Disturbance Monitoring and Reporting Requirements" is required. All data reportable to RFC and/or NERC shall also be made available to HE.

4.7 Make-Before-Break Transfer

Make-before-break transfer is only permitted between two live sources which are in, or close to, synchronism. A transfer switch designed for automatic make-before break transition shall be equipped with logic to prevent a transfer if the specifications for either the **Generation Facility Owner** or the HE transmission system source fall outside of the synchronizing requirements recommended by the generator equipment manufacturer. Switch transfers made when the synchronizing requirements cannot be met shall be of the break-before-make type of transfer. The time that the **Generation Facility Owner's** generation is permitted to operate in parallel with the HE Transmission System during a make-before-break transfer shall be no greater than 100 milliseconds (6 cycles).

³ North American Electric Reliability Council, "Reliability Considerations for Integrating Non-Utility Generating Facilities with the Bulk Electric Systems," January 1992.

4.8 Operating Restrictions

Situations necessitating generation curtailments or forced outages as the result of unavailability of transmission facilities owned and/or operated by HE are to be addressed in a Connection Agreement with the **Generation Facility Owner**.

5.0 PROTECTIVE RELAYING

Generation Facility Owner relay requirements are summarized in Section 3.2. Specific requirements are noted below.

5.1 Parallel Generation Facility

The following utility-grade relays shall be provided by the Generation Facility Owner for protection of the HE system. Use of the transfer trip receiver is conditional as set forth in Section 5.2, HE Facilities. All relays specified for the protection of the HE system, including time delay and auxiliary relays, shall be approved by HE. Relay operation for any of the listed functions shall initiate immediate separation of the **Generation Facility Owner**'s generation from the HE System.

<u>Relay</u>	<u>Function</u>
Frequency	To detect underfrequency and overfrequency operation.
Overvoltage	To detect overvoltage operation.
Undervoltage	To detect undervoltage operation.
Ground Detector	To detect a circuit ground on the HE system (applicable to three-phase circuits only).
Directional Overcurrent	To detect the directional flow of current in excess of a desired limit.
Transfer Trip Receiver	To provide tripping logic to the generation for isolation of the generation upon opening of the HE supply circuits.
Directional Power*	To detect, under all system conditions, a loss of HE primary source. The relay shall be sensitive enough to detect transformer magnetizing current supplied by the generation.

** If an agreement exists to supply power to the HE system, additional relays may be required to provide adequate protection for the HE system.*

The purpose of these relays is to detect the **Generator Owner's** energization of an HE circuit that has been disconnected from the HE system, to detect the generation operating at an abnormal voltage or frequency, or to detect a fault or abnormal condition on the HE system for which the **Generation Facility Owner** shall separate their generation.

Output contacts of these relays shall directly energize the trip coil(s) of the generator breaker or an intermediate auxiliary tripping relay which directly energizes the breaker trip coil(s). The relaying system shall have a source of power independent from the ac system or immune to ac system loss or disturbances (e.g., dc battery and charger) to assure proper operation of the protection scheme. Loss of this source shall cause removal of the generation from the HE system. The protective relays required by HE and any auxiliary tripping relay associated with those relays shall be utility-grade devices.

Utility grade relays are defined as follows:

1. Meet ANSI/IEEE Standard C37.90, "Relays and Relay Systems Associated with Electric Power Apparatus."
2. Have relay test facilities to allow testing without unwiring or disassembling the relay.
3. Have appropriate test plugs/switches for testing the operation of the relay.
4. Have targets to indicate relay operation.

HE will specify settings for the generation's HE-required relays to assure coordination between the generation protective equipment and the HE system relays. It is the **Generation Facility Owner's** responsibility to determine that their internal protective equipment coordinates with the required HE protective equipment and is adequate to meet all applicable standards to which the generation is subject. HE further reserves the right to modify relay settings when deemed necessary to avoid safety hazards to utility personnel or the public and to prevent any disturbance, impairment, or interference with HE's ability to serve other customers.

5.2 HE Facilities

If at any time it is determined that the use of the above relay systems cannot provide adequate protection to the HE system, the **Generation Facility Owner** shall additionally furnish and install at their expense, upon the request of HE, a transfer trip receiver(s) at his facility to receive tripping signals originating from a HE location(s).

This additional protection would also necessitate, at the **Generation Facility Owner's** expense, the purchase and installation of transfer trip equipment at the HE location(s) and a communication channel between the HE location(s) and the generation facility.

5.3 Other Protection Requirements

The following items should be coordinated with each other:

- Volts/Hz and overexcitation protection/limiting.
- Loss-of-excitation and underexcitation limiting.

6.0 TESTING AND MAINTENANCE

The **Generation Facility Owner** shall permit testing and maintenance of devices and control schemes provided by the **Generation Facility Owner** for the protection of the HE Transmission System by an HE approved organization. Included in the testing and maintenance will be any initial set up, calibration, and check out of the required protective devices, periodic routine testing and maintenance, and any testing and maintenance required as the result of changes to protective devices by the **Generation Facility Owner** or HE.

All testing and maintenance performed by the HE approved organization shall be under the general surveillance of HE. This may include circuit breakers, circuit switches, power fuses, instrument transformers, switches, surge arresters, bushings, relays, and associated equipment (including battery and battery charger). Maintenance procedures are detailed in the HE "Maintenance Strategy – Power Delivery xx". Also, a copy of all test and maintenance reports shall be forwarded to HE.

If the **Generation Facility Owner's** testing and maintenance program is not performed to the satisfaction of HE or at the required maintenance interval, HE reserves the right to inspect, test, or maintain the protective devices required for the protection of the HE transmission system. If the **Generation Facility Owner's** protective relaying is determined to be unsatisfactory, HE reserves the authority to disconnect the generation from the HE System.

All costs associated with the testing and maintenance of devices provided by the **Generation Facility Owner** for the protection of the HE transmission system, including costs incurred by HE in performing any necessary tests or inspections, shall be the responsibility of the **Generation Facility Owner**.

7.0 METERING AND TELEMETRY

The **Generation Facility Owner** shall be responsible for the installation and operating costs of the metering equipment at the delivery point. The metering equipment will include potential and current transformers, meters and test switches. The accuracy of the instrument transformers and meters will be 0.3 percent or better. The secondary wiring and burdens of the instrument transformers will be configured so that they do not degrade the accuracy of the metering equipment to less than 0.3 percent. The metering equipment will be tested periodically as defined in the connection agreement and the test results will be available to all involved parties. The meters, test switches and wiring termination equipment will be sealed and the seal may be broken only when the meters are to be tested, adjusted or repaired. Proper authorities in both parties will be notified when seals are broken.

At least (N-1) metering elements will be used to measure all real and reactive power crossing the metering point, where N is the number of wires in service including the ground wire. Bi-directional energy flows including watt-hour and var-hour will be separately measured on an hourly basis. Depending on the tariffs to be applied, appropriate demand quantities will be metered in terms of kilowatts, kilovars or kilovoltamperes. The meters will have a separate register for loss compensation. If required, voltage measurements will be provided.

If, at the discretion of HE, the generation necessitates real-time telemetry to the HE System Control Center, the **Generation Facility Owner** shall install and operate at their expense the communication channel, the HE approved telemetry equipment and associated devices.

At the discretion of HE, generation control facilities and supervisory control and data acquisition of specific electrical devices from the HE System Control Center may be necessary to integrate the generation into HE's control area. Such additional facilities, including required communication channels, shall, if required, be furnished and installed at the **Generation Facility Owner's** expense. The requirement for data acquisition and control will depend on the generation capacity, system location and voltage, and the net generation input into HE System.

Suitable telemetry equipment will be installed at the metering point to provide real-time telemetry data to HE and to all other participating parties. Telemetry equipment will include transducers, remote terminal units, modems, telecommunication lines, and any other equipment of the same or better function. The remote terminal unit, or equivalent device, must have multiple communication ports to allow simultaneous communications with all participating parties. That device will accommodate data communication requirements specified by each participating parties' control center, including communication protocol, rate and mode (either synchronous or asynchronous). All metered values provided to the telemetry equipment will originate from common metering equipment. All transducers used for telemetry will have at least 0.2 percent accuracy. As part of real-time data to be provided, HE has the right

to require the status and remote control of switching devices at the Receipt and/or Delivery Points.

A continuous, accumulating record of megawatt-hours and megavar-hours will be provided by means of the registers on the meter. Freezing accumulation data for transmission will be taken every clock hour. The freezing signals synchronized to within 2 seconds of Universal Coordinated Time must be provided by only one of the agreed upon participating parties. If the freeze signal is not received within a predefined time window, the remote terminal unit, or equivalent device, will be capable of freezing data with its own internal clock.

The metering, if external power supply is required, and telemetry equipment will be powered from a reliable power source, such as a station control battery, in order to allow the equipment to be continuously operational under any power outage situations. Proper surge protection will be provided for each communication link to protect communication hardware from ground-potential-rise due to any fault conditions. A separate communication media shall be provided to allow HE to remotely retrieve billing quantities from the meters. When real-time telemetry is required, a back-up data link must be provided in case of the outage of the primary telemetry line. The back-up link can be a data communication link between involved control centers; the party requesting service is responsible for furnishing the back-up link.

Data acquisition and control information will typically include, but not be limited to:

1. desired generation MW set point,
2. automatic generation control status (on, off),
3. generator availability,
4. generation MW, Mvar output,
5. generator minimum and base MW capability,
6. generator MW AGC high limit and low limit,
7. connection facilities' breaker status/control/alarms,
8. connection facilities' MW and MVAR line values and bus voltage, and
9. generator and substation metering (MWh) data.

8.0 COMMUNICATIONS

8.1 Voice Communications

- A. **Normal** – At HE's request, the **Generation Facility Owner** shall provide a dedicated voice communication circuit to the HE System Control Center (SCC). Such a dedicated voice communication circuit would originate from the Owner's office staffed 24 hours a day and would be typically required for generation facility synchronization and operation within HE's Control Area.

All other normal voice communication concerning facility operations shall be conducted through the public telephone network to the SCC phone number(s) issued by HE.

- B. **Emergency** – Voice communications in the event of a transmission system or capacity emergency shall use the dedicated voice circuits, or public telephone

network and phone number(s) designated for emergency use.

In the event of a transmission system or capacity emergency, the Generation Facility Owner may be notified by the HE System Control Center. Specific instructions may also be given regarding the operation of the Owner's unit(s) depending on the nature of the emergency. These instructions may consist of voltage schedule changes, real and/or reactive dispatch changes, or instructions to shut down or start-up the Owner's unit(s). It is the Owner's responsibility to ensure that the unit operators follow all instructions given by the HE Control Center during system emergencies.

9.0 COSTS INCURRED

The **Generation Facility Owner** shall reimburse all costs incurred by HE to provide operation of their generation. The costs include but are not limited to:

1. Each review of the engineering and engineering drawings associated with the generation.
2. All metering not covered under the transmission tariff of general applicability.
3. The necessary facility modifications on the HE transmission system to adequately accommodate the operation of the **Generation Facility Owner's** generation.
4. HE facility replacements, modifications, and/or enhancements due to exceeded ratings directly caused by or which could potentially be caused by the power flow attributed to the generation.
5. All communications circuits required for telemetering, protective relaying, and/or voice communications with the generation.
6. All protective devices to be provided by the **Generation Facility Owner** for the protection of the HE transmission system.
7. All protective relaying, including the transfer trip transmitter(s), receiver(s), and associated equipment, not on the **Generation Facility Owner's** premises required by HE due to the addition of the generation.
8. All protective relaying required to protect the generation from faults and abnormal system operating conditions.
9. All additional regulating and control devices required to meet the conditions set forth in Section 4.0. This would include any equipment necessary for suppression of harmonic current and/or voltages.
10. HE equipment replacements or modifications due to an increase in available short circuit fault current directly caused by the addition of the Generation Facility Owner's equipment.
11. Calibration, testing, and maintenance of relays and protective devices provided by the **Generation Facility Owner** for the protection of the HE transmission system.

12. All telemetering equipment to provide necessary telemetry to the HE System Control Center.
13. Future changes associated with the generation due to changing conditions on the HE system.
14. All studies performed by HE pertaining to the generation.

10.0 DESIGN REVIEW

The **Generation Facility Owner** is responsible for submitting all specifications and detailed plans to HE for review and approval prior to receiving permission to connect to the HE transmission system.

HE requires notification in letter form for the proposed installation of any generation, including an emergency generator utilizing a make-before-break transfer switch. In order to allow for timely exchange of information, this notification should be provided during the preliminary planning stages of the proposed facility. If the proposed installation is intended to either displace load or to actually supply energy to the HE transmission system, a Notification of Intent to Install and Operate Generation (NIOG), as shown in Appendix E, must be submitted.

The NIOG document should be submitted to HE at least six (6) months prior to the proposed in-service date for load displacement installations and twelve (12) months or more where generation will be supplied to the HE transmission system. Where proposed generation additions require changes to the HE transmission system, earlier notification may be necessary. HE requires a review of the **Generation Facility Owner's** plans for the generation in order to provide for compatibility of design and operation with the HE transmission system.

10.1 Notification of Intent

The **Generation Facility Owner** is required to complete and forward a NIOG to an HE customer service representative with the appropriate deposit and all necessary attachments which shall include:

1. A summary, signed by the **Generation Facility Owner** management, that provides a general description of the intended manner of operation for the generation.
2. Three copies of drawings and specifications prepared and approved by a registered professional engineer adequately detailing the facility location and proposed location of the generation facilities with respect to the Generation Facility Owner's desired point of electric service and the appropriate disconnecting devices identified in Section 3.6.
3. Three copies of a comprehensive single-line diagram prepared and approved by a registered professional engineer. This information must comprehensively show the **Generation Facility Owner's** intended configuration for operation

including switching devices, transformers, generation facility, protective devices, metering devices, capacitors, proposed conductor sizes, etc.

HE will review the information supplied with the NIOG and provide appropriate engineering and operational comments and/or concerns that must be addressed and jointly resolved with HE. This review will also include a summary addressing other tangible responsibilities and associated estimated costs the Generation Facility Owner will incur as reflected in Section 9.0 of this document.

10.2 Facility Data

At least three (3) months prior to the in-service date, the following data shall be received by HE. If the data is not available three months prior to the in-service date, the **Generation Facility Owner** shall provide estimates based on their design information. Such data shall be identified as "estimated" and replaced with actual data by the **Generation Facility Owner** as it becomes available prior to installation. The purpose of generation facility data to be provided to HE by the Generation Facility Owner is to ensure proper coordination to protect against equipment or facility damage, to mitigate safety hazards to utility personnel and the public, and to minimize disturbances, impairment, or interference with HE's ability to serve other transmission system users.

10.2.1 Data on Equipment to be Installed

- a. Interrupting Devices and Relays - Complete manufacturer's data for interrupting devices and relays or fuses used for the protection of the HE system and the generation.
- b. Power Transformers - Complete nameplate or test sheet data, including manufacturer, serial number, high- and low-side voltage taps, kVA ratings, impedance, load loss and no load loss watts, high- and lowside voltage winding connections, low-side voltage winding grounding (if used), and high voltage inrush current.
- c. Power Capacitors - Location, kV and kVAR rating of capacitor banks, number of units, and bank configuration.

10.2.2 Data on the generation protection equipment, including make-before-break transfer switches, fuses, breakers, relays, relay settings associated with the proposed generation, and detailed schematic diagrams of protective relaying proposed for the HE transmission system.

Complete manufacturer's data and specifications for make-before-break transfer switches, including transfer times and conditions of transfer, testing procedures, equipment schematics, and backup protection.

10.2.3 Information on characteristics of load, such as initial and near future expected load, power factor of such load, and dynamic (flicker, harmonics, etc.) character of such load.

10.2.4 Minimum and maximum required low-side operating voltages.

10.2.5 Generator Data:

- a. Type (synchronous, induction, dc with solid-state inverter, etc.);
- b. Nameplate data and ratings, including any rectifying, regulating, or inverting equipment;
- c. Harmonic content at full rated output;
- d. Detailed Dynamic Performance Data in accordance with Appendix B.
- e. Real and Reactive capabilities at scheduled voltages.

10.2.6 Electric one-lines and schematic diagrams showing the generation, the interconnecting facility with the HE transmission system, and the protective relaying.

11.0 INSPECTION REQUIREMENTS

Before a generation facility can be energized, it must pass a final inspection by HE personnel. HE will inspect all substation equipment from the point of interconnection to the first protective fault interrupting device. This may include circuit breakers, circuit switchers, power fuses, instrument transformers, switches, surge arresters, bushings, and relays and associated equipment (including battery and battery chargers). The inspection will consist of a visual inspection of all major equipment as well as review of required test results.

12.0 FINAL DOCUMENTATION

HE shall receive final documentation of the generation facility that replaces the above specifications and data submitted for the design review under Section 10.2 once the facility is ready for operation.

Prior to operation of a generation facility, the **Generation Facility Owner** shall supply to HE three copies of all final electric one-lines, equipment data, and schematic diagrams. Subsequent revisions affecting the generation shall be documented with three copies of the revised electric one-line and schematic diagrams.

13.0 APPROVAL

The construction, testing, and maintenance of the protective equipment provided by the **Generation Facility Owner** for protection of the HE transmission system shall be subject to review and approval by HE.

Prior to establishing service for operation, the **Generation Facility Owner** shall obtain approval from HE for the generation, electrical equipment specifications, and operating procedures.

Final approval for operation of a **Generation Facility Owner's** generation will be issued by HE. A signed contractual document with HE for the generation is required for final approval. Failure to meet any of the requirements stated herein to the satisfaction of HE may result in a refusal to permit operation of the generation.

Review and approval by HE of the proposed generation facility specifications and plans shall not be construed as confirming or endorsing the design or warranting the safety, durability, reliability, adequacy, or otherwise of the generation facility.

Note that the proposing entity must have approval from MISO before receiving any approval from HE.

14.0 SPECIAL PROVISIONS

Special provisions may be made with operators of small power production facilities and other co-generators pursuant to rules of the Federal and/or State agencies of the applicable regulatory jurisdiction.

15.0 COORDINATION WITH OTHER CODES, STANDARDS, AND AGENCIES

The information contained in this document is supplementary to and does not intentionally conflict with or supersede the National Electric Code (NEC) as approved by the American National Standards Institute (ANSI) or such federal, state and municipal laws, ordinances, rules or regulations as may be in force within the cities, towns or communities in which HE furnishes electric service. It is the responsibility of the **Generation Facility Owner** to conform to all applicable national, state and local laws, ordinances, rules, regulations, codes, etc.

16.0 INDEMNIFICATION

The use and reliance upon the information contained in this document shall in no way relieve the **Generation Facility Owner** from the responsibility to meet NEC and NESC requirements governing their design, construction, operation, and materials. The **Generation Facility Owner**, for itself, its successors, assigns and subcontractors will be required to pay, indemnify and save HE, its successors and assigns, harmless from and against any and all court costs and litigation expenses, including legal fees, incurred or related to the defense of any action asserted by any person or persons for bodily injuries, death or property damage arising or in any manner growing out of the use and reliance upon the information provided by HE. Reliance upon the information in this document shall not relieve the Generator Facility Owner from responsibility for the protection and safety of the general public.

APPENDIX A:

Figures

Figure 1 -- Typical Generation Tap Line Supply Configurations

Figure 2 -- Typical Generation Arrangements for Transmission Bus Connection

FIGURE 1 Typical Generation Tap Line Supply Configurations

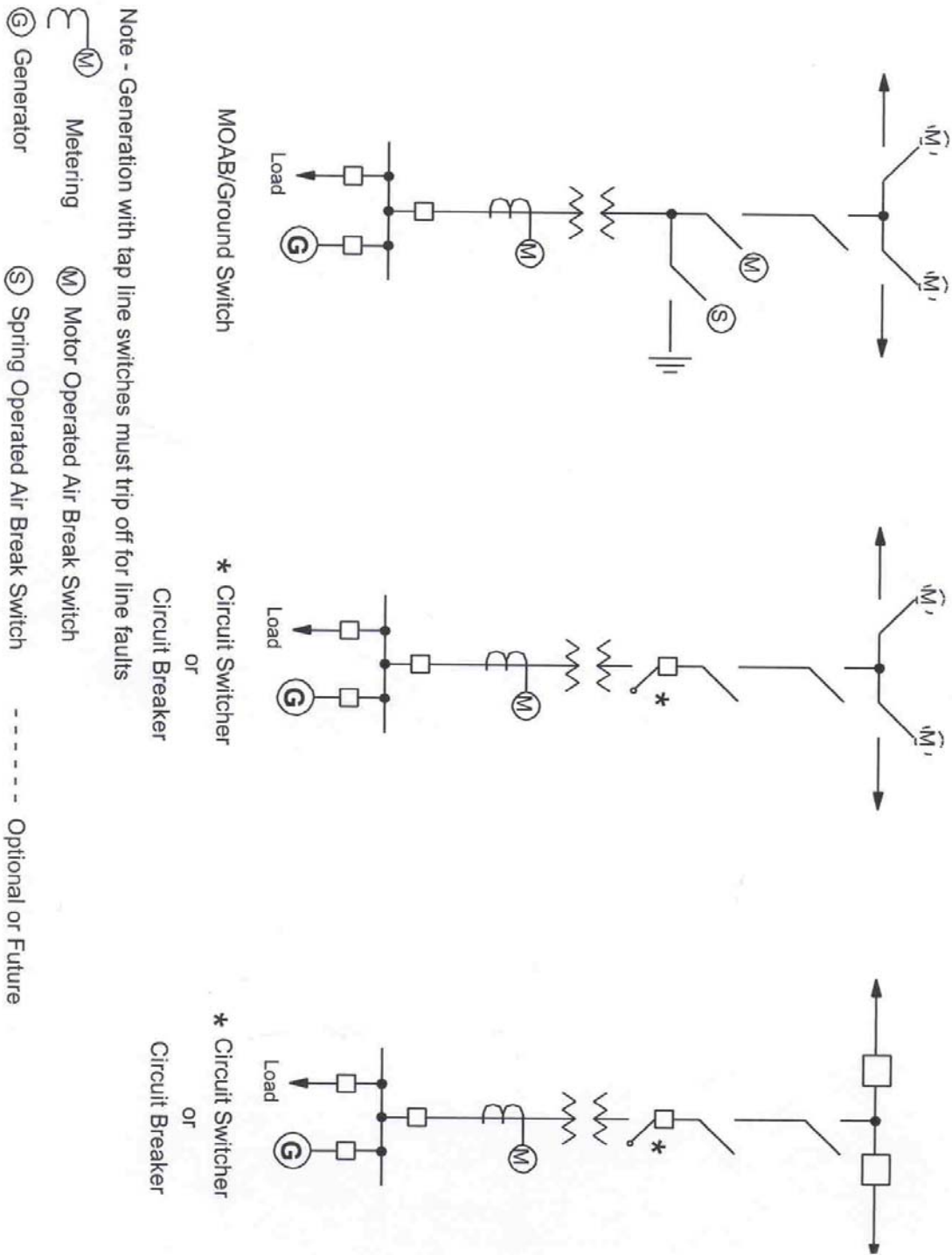
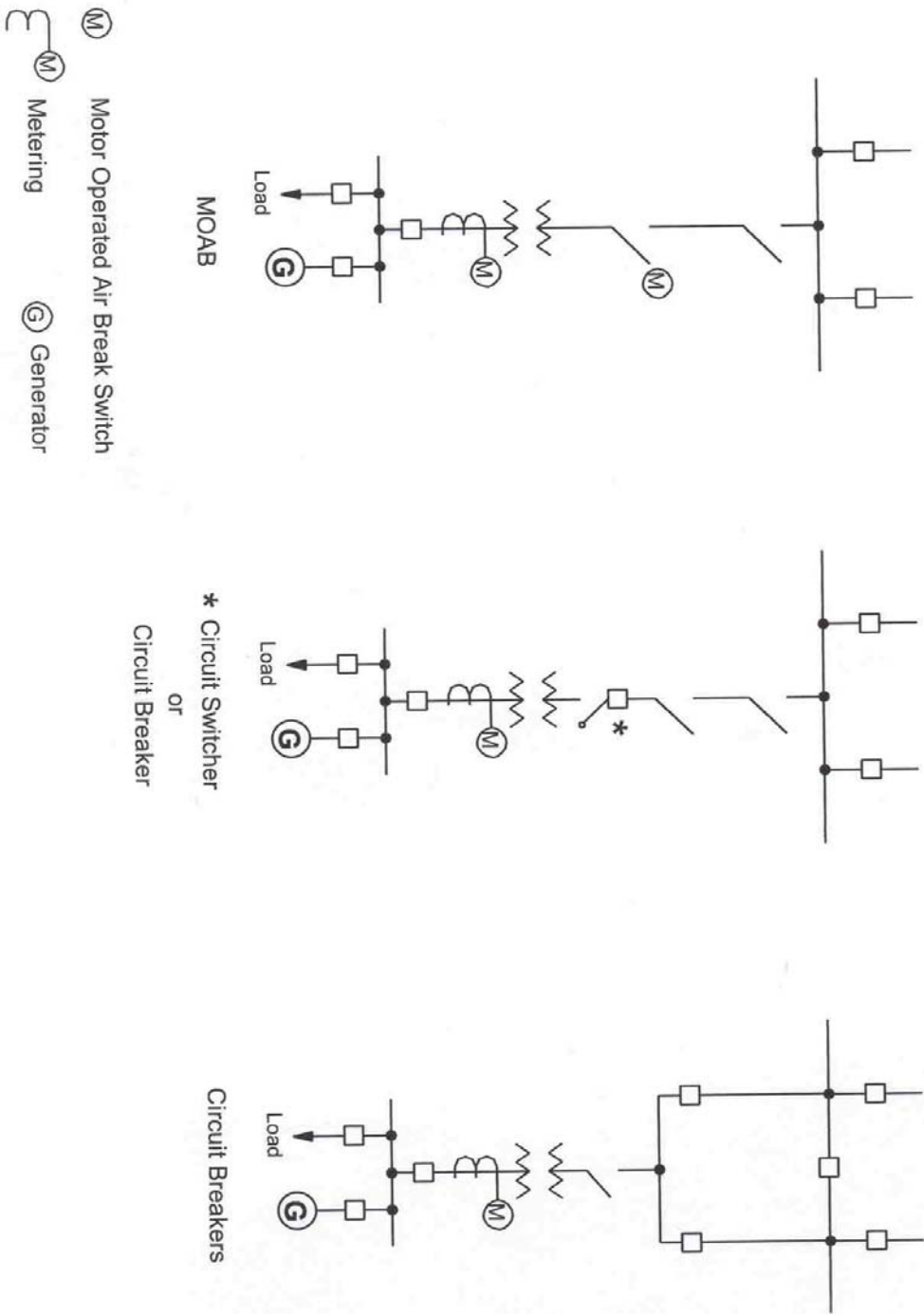


FIGURE 2 Typical Generation Arrangements For Transmission Bus Connection



APPENDIX B:

Generation Dynamic Performance Data

Customer Name _____ Date ____/____/____

GENERATOR DATA

UNIT RATINGS

kVA _____	_____ °F	Voltage _____
Power Factor _____	_____	H2 psig _____
Speed (RPM) _____	_____	Connection (e.g. Wye) _____
Short Circuit Ratio _____	_____	Frequency, Hertz _____
Stator Amperes at Rated kVA _____	_____	Field Volts _____

REACTANCE DATA (PER UNIT-RATED KVA)

Synchronous – saturated
Synchronous – unsaturated
Transient – saturated
Transient – unsaturated
Subtransient – saturated
Subtransient – unsaturated

Negative Sequence – saturated
Negative Sequence – unsaturated
Zero Sequence – saturated
Zero Sequence – unsaturated
Leakage Reactance

DIRECT AXIS QUADRATURE AXIS

X _{dv} _____	X _{qv} _____
X _{di} _____	X _{qi} _____
X' _{dv} _____	X' _{qv} _____
X' _{di} _____	X' _{qi} _____
X'' _{dv} _____	X'' _{qv} _____
X'' _{di} _____	X'' _{qi} _____

FIELD TIME CONSTANT DATA (SEC)

Open Circuit
Three-Phase Short Circuit Transient
Line to Line Short Circuit Transient
Line to Neutral Short Circuit Transient
Short Circuit Subtransient
Open Circuit Subtransient

T' _{do} _____	T' _{qo} _____
T' _{d3} _____	T' _q _____
T' _{d2} _____	
T' _{d1} _____	
T'' _d _____	T'' _q _____
T'' _{do} _____	T'' _{qo} _____

ARMATURE TIME CONSTANT DATA (SEC)

Three Phase Short Circuit
Line to Line Short Circuit
Line to Neutral Short Circuit

Ta ₃ _____
Ta ₂ _____
Ta ₁ _____

ARMATURE WINDING RESISTANCE DATA (PER UNIT)

Positive
Negative
Zero

R ₁ _____
R ₂ _____
R ₀ _____

Rotor Short Time Thermal Capacity I ² t	= _____
Field Current at Rated kVA, Armature Voltage and PF	= _____ amps
Field Current at Rated kVA and Armature Voltage, 0 PF	= _____ amps
Three Phase Armature Winding Capacitance	= _____ microfarad
Field Winding Resistance	= _____ ohms _____ °C
Armature Winding Resistance (Per Phase)	= _____ ohms _____ °C

COMBINED TURBINE-GENERATOR-EXCITER INERTIA DATA (Provide one)

Inertia Constant, H = _____ kW sec/kVA
 Moment-of-Inertia, WR² = _____ lb. ft.²

CURVES

Saturation, Vee, Reactive, Capacity Temperature Correction

GENERATOR STEP-UP TRANSFORMER DATA

RATINGS

Capacity Self-cooled/maximum nameplate _____/_____ kVA
 Voltage Ratio Generator side/System side _____/_____ kV
 Winding Connections Low V/High V (Delta or Wye) _____/_____
 Fixed Taps Available _____
 Present Tap Setting _____
 Load Tap Changer? _____ Yes _____ No
 Range (+/-%) _____

IMPEDANCE

Positive Z1 (on self-cooled kVA rating) _____ %
 Zero Z0 (on self-cooled kVA rating) _____ %

EXCITATION SYSTEM

Identify appropriate IEEE model block diagram of excitation system and power system stabilizer (PSS) for computer representation in power system stability simulations and the corresponding excitation system and PSS constants for use in the model. Also, identify the source(s) (e.g., vendor or field tests) of the model and modeling data.

GOVERNOR SYSTEM

Identify appropriate IEEE model block diagram of governor system for computer representation in power system stability simulations and the corresponding governor system constants for use in the model. Also, identify the source(s) (e.g., vendor or field tests) of the model and modeling data.

APPENDIX C:

HE Voltage Flicker Criteria and Harmonic Distortion Criteria

HE Voltage Flicker Criteria and Harmonic Distortion Criteria

This document summarizes HE's policy on voltage flicker and harmonic distortion for customers connected to the electrical system via a Company dedicated transformer or a Customer owned transformer. The term Company is defined as Hoosier Energy REC, Inc (HE). The term Customer is defined as the party connected to the HE System.

I. POINT OF COMPLIANCE – The point where the Company dedicated transformer or Customer owned transformer connects to the Company system will be the point where compliance with the voltage flicker and harmonic distortion requirements are evaluated.

II. VOLTAGE FLICKER CRITERIA – The Company requires that the voltage flicker occurring at the point of compliance shall remain below the Border Line of Visibility curve on the IEEE/GE curve for fluctuations less than 1 per second or greater than 10 per second (see Exhibit 1). In the range of 1 to 10 fluctuations per second, the voltage flicker shall remain below 0.4%.

The Customer agrees that under no circumstances will it permit the voltage flicker to exceed the Company criteria, whether or not complaints are received or service/operational problems are experienced on the Company subtransmission or transmission system. Should complaints be received by the Company or other operating problems arise, or should the Customer flicker exceed the borderline of visibility curve, the Customer agrees to take immediate action to reduce its flicker to a level at which flicker complaints and service/operational problems are eliminated.

Corrective measures could include, but are not limited to, modifying production methods/materials or installing, at the Customer's expense, voltage flicker mitigation equipment such as a static var compensator. The Company will work collaboratively with the Customer to assess problems, identify solutions and implement mutually agreed to corrective measures.

If the Customer fails to take corrective action after notice by the Company, the Company shall have such rights as currently provided for under its tariffs, which may include discontinuing service, until such time as the problem is corrected.

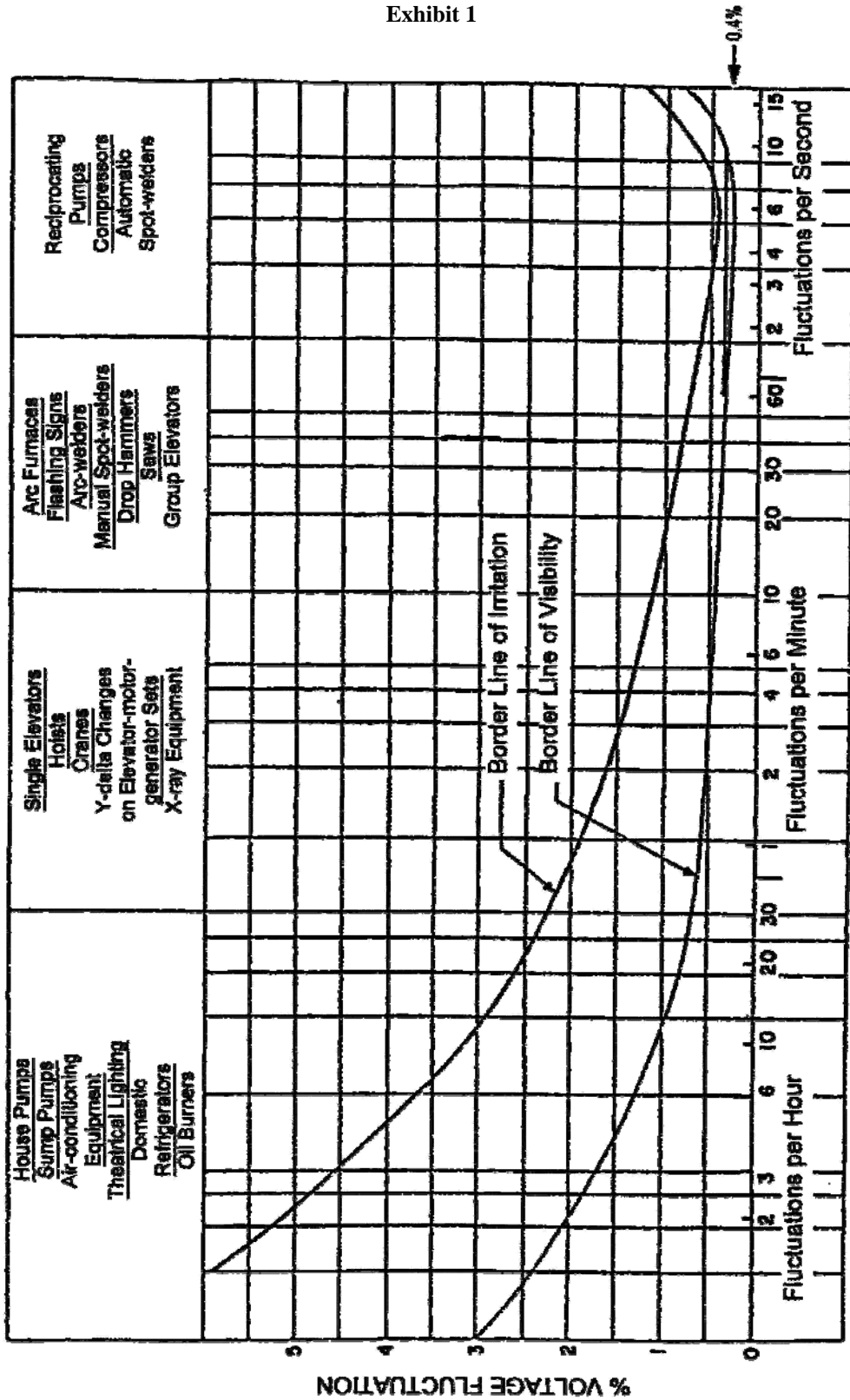
III. HARMONIC DISTORTION CRITERIA - The Company also requires that the Customer's operation be in compliance with the Company's Harmonic Distortion Guidelines (see Exhibit 2). These requirements are based on IEEE Standard 519, "IEEE Recommended Practices and Requirements for Harmonic Control in Electric Power Systems".

The Customer agrees that the operation of motors, appliances, devices or apparatus served by its system and resulting in harmonic distortions in excess of the Company's Requirements will be the Customer's responsibility to take immediate action, at the Customer's expense, to comply with the Company's Harmonic Distortion Requirements. The Company will work collaboratively with the Customer to assess problems, identify solutions and implement mutually agreed to corrective measures.

If the Customer fails to take corrective action after notice by the Company, the Company shall have such rights as currently provided for under its tariffs, which may include discontinuing service, until such time as the problem is corrected.

Exhibit 1

Exhibit 1



Composite curve of voltage flicker studies by General Electric Company, General Electric Review, August 1925; Kansas City Power & Light Company, Electrical World, May 19, 1934; T&D Committee, EET, October 24, 1934, Chicago; Detroit Edison Company; West Pennsylvania Power Company; Public Service Company of Northern Illinois.

Relations of Voltage Fluctuations to Frequency of Their Occurrence (Incandescent Lamps)

Exhibit 2

HE HARMONIC DISTORTION REQUIREMENTS

The HE Harmonic Distortion Requirements shown below are based on the information presented in the IEEE Standard 519, approved in 1992 and titled, "IEEE Recommended Practices and Requirements for Harmonic Control in Electric Power Systems." The voltage limits are intended to be used to gauge the acceptability of harmonic magnitudes on the transmission systems, while the current limits are applicable to individual customers injecting harmonic currents at the point of common coupling (PCC).

HARMONIC VOLTAGE DISTORTION (THD_v) LIMITS

Bus Voltage at PCC	Individual Harmonic Voltage Distortion (%)	Total Voltage Distortion THD _v (%)
≤ 69 kV	3.0	5.0
69 kV < v ≤ 161 kV	1.5	2.5
Above 161 kV	1.0	1.5

HARMONIC CURRENT DEMAND DISTORTION (TDD) LIMITS

MAXIMUM HARMONIC CURRENT DISTORTION IN % OF BASE QUANTITY						
Harmonic Order (Odd Harmonics)						
v < 69 kV						
I _{sc} /I _L	<11	11≤h<17	17≤h<23	23≤h<35	35≤h	TDD
<20	4.0	2.0	1.5	0.5	0.3	5.0
20-50	7.0	3.5	2.5	1.0	0.5	8.0
50-100	10.0	4.5	4.0	1.5	0.7	12.0
100-1000	12.0	5.5	5.0	2.0	1.0	15.0
>1000	15.0	7.0	6.0	2.5	1.4	20.0
69 kV < v < 161 kV						
<20*	2.0	1.0	0.75	0.3	0.15	2.5
20-50	3.5	1.75	1.25	0.5	0.25	4.0
50-100	5.0	2.25	2.0	0.75	0.35	6.0
100-1000	6.0	2.75	2.5	1.0	0.5	7.5
>1000	7.5	3.5	3.0	1.25	0.7	10.0
161 kV < v						
<50	2.0	1.0	0.75	0.3	0.15	2.5
≥50	3.0	1.5	1.15	0.45	0.22	3.75
Where I _{sc} = Maximum short circuit at PCC I _L = Load current at the time of the maximum metered amount						
*All power generation equipment is limited to these values of current distortion, regardless of actual I _{sc} /I _L .						
Even harmonics are limited to 25% of the odd harmonic limits above.						

Exhibit 3

- o **Harmonic Voltage Distortion** is to be normalized to the nominal system voltage and calculated using Equation 1.

TOTAL VOLTAGE HARMONIC DISTORTION (THD_v) in percent:

$$THD_v = \frac{\sqrt{\sum_{n=2}^{\infty} V_n^2}}{V_o} \times 100\% \quad (Eq. 1)$$

Where:

- V_n = Magnitude of Individual Harmonics (RMS)
- V_o = Nominal System Voltage (RMS)
- n = Number of Harmonic Order

- o **Harmonic Current Distortion** is to be normalized to the customer's load current at the time of the maximum metered demand which occurred over the preceding twelve months for existing customers and the customer's anticipated peak demand for new customers. For existing customers who are increasing their load, the projected demand should be used. The harmonic current demand distortion (TDD) should be calculated using Equation 2.

TOTAL CURRENT DEMAND DISTORTION (TDD) in percent:

$$TDD = \frac{\sqrt{\sum_{n=2}^{\infty} I_n^2}}{I_L} \times 100\% \quad (Eq. 2)$$

Where:

- I_n = magnitude of Individual Harmonic (RMS)
- I_L = Load Current at the Time of the Maximum Metered Demand
- n = Harmonic Order

- o **PCC - Point of Common Coupling.** The location where the customer accepts delivery of electrical energy from the utility.

Field Measurements

To gauge the acceptability of field measured harmonic distortion, a statistical evaluation of the data is to be performed. Measurements should be taken at five minute intervals or less over a minimum of 24 hours. For the measured data to be considered acceptable, two criteria must be met: 1) 95% of the measured data must fall below the limits stated; 2) no measured data shall exceed the limits specified by more than 50% of the absolute upper limit value.

Exhibit 4

Communication Interference Limits (I²T)

As stated in IEEE Standard 519, it is difficult to place specific limits on the telephone influence which the harmonic components of current and voltage can inflict. Hence, IEEE Standard 519 outlines a range of values where problems could occur (refer to the table below). The actual interference to voice communication systems in proximity to the power system is dependent upon a number of factors not under the control of the utility or customer. These factors will vary from location to location and from time to time as the state-of-the-art of inductive coordination progresses.

IEEE Standard 519 - Balanced I ² T Guidelines		
Category	Description	I ² T
I	Levels most unlikely to cause interference	<10,000
II	Levels that might cause interference	10,000 to 25,000
III	Levels that probably will cause interference	> 50,000

The limit applicable to HE is the upper bound limit of the I²T levels that might cause interference on telephone systems. Thus, the customer induced harmonics shall not result in an I²T product to exceed 25,000 weighted amperes per phase, applicable to both the transmission and distribution systems. Residual I²T should also be minimized. Residual I²T is I₀²T, where I₀ is the earth return current and is defined as the difference between the phasor sum of phase currents and neutral current. The I²T calculation is to be performed using Equation 3. The weighting of harmonic currents should conform to the 1960 TIF curve shown below.

$$I^2T = I \cdot TIF = \sqrt{\sum_{n=1}^K (I_n \cdot W_n)^2} \text{ weighted amperes} \quad (Eq. 3)$$

Where:

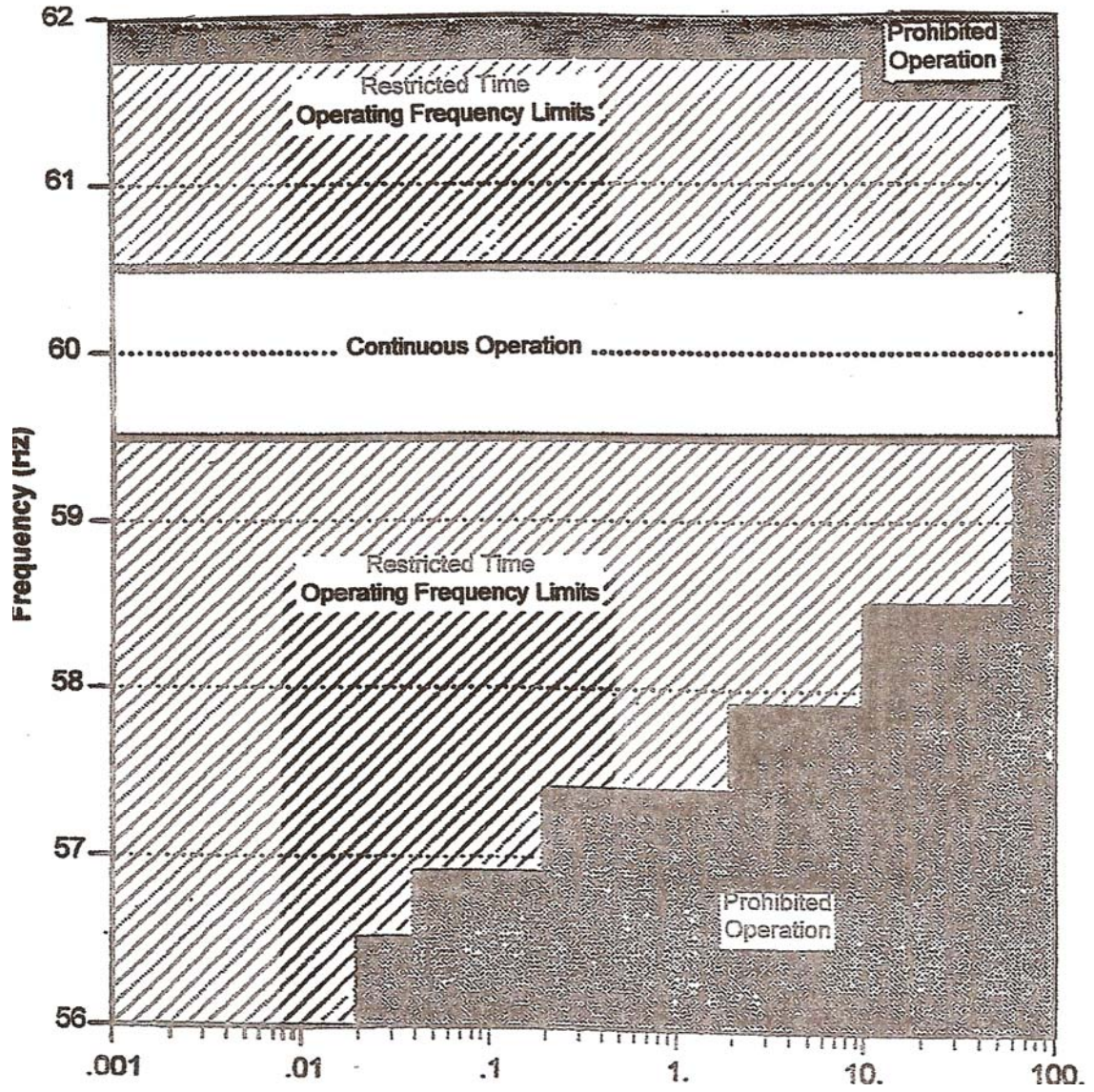
- I = Current of individual harmonics, amperes, RMS
- T = Telephone Influence Factor (TIF)
- W_n = Single frequency TIF weighting at frequency n (refer to table and chart below)
- K ≤ 42, Maximum harmonic order

FREQ	TIF (W)	FREQ	TIF (W)	FREQ	TIF (W)	FREQ	TIF (W)
60	0.5	1020	5100	1860	7820	3000	9670
180	30	1080	5400	1980	8330	3180	8740
300	225	1140	5630	2100	8630	3300	8990
360	400	1260	6050	2160	8880	3540	9730
420	650	1380	6370	2220	9330	3660	9130
540	1320	1440	6650	2340	9840	3900	9400
660	2260	1500	6680	2460	10340	4020	9700
720	2760	1620	6970	2580	10600	4260	9750
780	3360	1740	7320	2820	10210	4380	9190
900	4350	1800	7570	2940	9820	5000	940
1000	5000						

APPENDIX D:

Generation Abnormal Frequency Operating Allowance

Generation Abnormal Frequency Operating Allowance



APPENDIX E:

Notification of Intent to Install and Operate Generation
Interconnected with the HE Transmission System

Title NOTIFICATION OF INTENT TO INSTALL AND OPERATE
GENERATION INTERCONNECTED WITH THE HE
TRANSMISSION SYSTEM

Page: 1 of 4
Revision:
Date: 6/11/02

PURPOSE: The information to be provided in this Notification of Intent to Install and Operate Generation (NIOG) is necessary to evaluate and successfully integrate the **Generation Facility Owner's** facility within the HE transmission system and to provide for compatible operation of the integrated facilities. Failure to comply with the HE Tariffs and Regulations filed with the Federal and State agencies having jurisdiction in HE's seven state operating area may result in discontinuation of service or refusal to furnish service to the **Generation Facility Owner**.

NIOG FILING: Any **Generation Facility Owner** who plans to install generation that will be connected to the interconnected elements of an electric service supplied from the HE transmission system is to complete this NIOG and submit it to an HE Customer Service representative. Any subsequent change in the information supplied by the Generation Facility Owner on this NIOG is to be communicated to the HE Customer Service representative by the **Generation Facility Owner** as soon as available.

NIOG DEPOSIT: The **Generation Facility Owner** shall reimburse HE for all costs incurred by HE for facilities and services required to review, evaluate and provide for operation of the Owner's generation, including, but not limited to, the evaluation of information provided in this NIOG. A deposit of \$5.00 per proposed installed kilowatt for a total of \$_____, payable to HE must be submitted with each NIOG. Following the project completion, customer-written notification of the project termination, or other interval as determined by HE, an accounting of the charges due HE less the NIOG deposit will be submitted to the **Generation Facility Owner**.

1.0 OWNER INFORMATION

Entity/Requester/Company Name: _____
Facility Owner's Name: _____
Mailing Address: _____
City: _____ County: _____ State: _____ Zip Code: _____

2.0 PROJECT DESIGN/ENGINEERING INFORMATION

Company: _____
Mailing Address: _____
City: _____ County: _____ State: _____ Zip Code: _____
Contact Representative: _____ Phone No. _____

Title NOTIFICATION OF INTENT TO INSTALL AND OPERATE
GENERATION INTERCONNECTED WITH THE HE
TRANSMISSION SYSTEM

Page: 2 of 4
Revision:
Date: 6/11/02

3.0 FACILITY INFORMATION

- 3.1 Does the Owner's proposed generator facility qualify as a PURPA facility?
_____ Yes _____ No
If yes, attach a copy of the required information the Owner has filed or proposes to file with the Federal Energy Regulatory Commission.
- 3.2 Does the Owner propose to export power to the HE transmission system?
_____ Yes _____ No
If yes, indicate the proposed contract type to be made with HE:
(a) Proposed Contract Capacity in kW to HE _____
(b) Proposed Yearly kWh Sales to HE _____
(c) Indicate Sales Schedule _____ kW On-Peak _____ kW Off-Peak
_____ kWh On-Peak _____ kWh Off-Peak
- 3.3 How many generating units does the owner propose to operate? _____
Specify the proposed operating date for each unit: _____

4.0 ESTIMATED OPERATIONAL INFORMATION: This information will be used to properly determine the capacity interfacing requirements for the Owner's proposed generation facility, and establish maintenance, supplementary, and backup power requirements.

- 4.1 Generator Operating Hours/Year: _____
- 4.2 The Generation System will operate in the following mode:
Base Load On-Peak Only Base Load 24 Hours a Day
Peak Shaving Emergency Generation Only
- 4.3 Energy Generated MWH/Year: _____
- 4.4 Min. and Max. Anticipated Facility Load with Generator not Operating:
Minimum - _____ kW _____ kVA Maximum - _____ kW _____ kVA
- 4.5 Min. and Max. Anticipated Facility Load with Generator Operating:
Minimum - _____ kW _____ kVA Maximum - _____ kW _____ kVA
- 4.6 Specify the contract capacity desired:
_____ kW _____ kVA

NOTE: Specified Supplementary Capacity plus Specified Backup Capacity must equal the Specified Contract Capacity.

Title NOTIFICATION OF INTENT TO INSTALL AND OPERATE GENERATION INTERCONNECTED WITH THE HE TRANSMISSION SYSTEM Page: 4 of 4
Revision:
Date: 6/11/02

6.0 ATTACHMENTS OWNER TO PROVIDE WITH THIS NIOG

- 6.1 A summary, signed by the Owner management, that provides a general description of the intended manner or operation for the generation facility.
- 6.2 Three copies of drawings and specifications prepared and approved by a registered professional engineer adequately detailing the facility location and proposed location of the Owner's generation facilities with respect to the Owner's desired point of electric service and the appropriate disconnecting devices identified in Paragraph 4.6 of the document titled "Requirements for Connection of Generation Facilities to the HE Transmission System."
- 6.3 Three copies of a comprehensive single-line diagram prepared and approved by a registered professional engineer. This information must comprehensively show the Owner's intended configuration for operation including switching devices, transformers, generation facility, protective devices, metering devices, capacitors, proposed conductor sizes, etc.

7.0 OWNER AUTHORIZATION: I, the undersigned and authorized representative of the above generation facility, acknowledge that the aforementioned information is to be used for a review process performed by HE who will subsequently provide appropriate engineering and operational comments and/or concerns that must be addressed and jointly resolved with HE.

Owner permission to operate generation in parallel with HE will only be granted after specified HE requirements and contractual commitments are met. I also acknowledge receipt from an HE Customer Service Representative of a document titled "Requirements for Connection of Generation Facilities to the HE Transmission System."

Authorized Signature: _____ Date: _____
Name (Print): _____ Title: _____