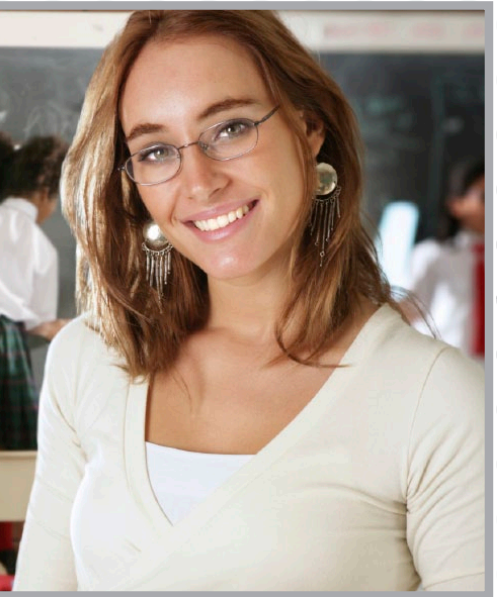


>> Environmental Education
Center at Turtle Creek Reservoir
>> Freshwater Fred's Lending Library

Looking for a diverse teaching environment?

If your answer is yes, then the Education Center at Turtle Creek Reservoir can help. This facility helps educators place their students into a laboratory where they can put to use a variety of teaching methods.



Hoosier Energy's Environmental Education Resources



What is Hoosier Energy and what do they do?

Hoosier Energy is a generation and transmission cooperative providing electric power to 18 member electric distribution cooperatives in central and southern Indiana and southeastern Illinois. Based in Bloomington, Indiana, Hoosier Energy operates coal, natural gas and renewable energy power plants and delivers power through a 1,450-mile transmission network.

Hoosier Energy is a Touchstone Energy cooperative – an alliance of local, consumer owned utilities around the country that are committed to providing superior service at affordable rates to all electric consumers.

Contact Hoosier Energy at:

Hoosier Energy REC • P.O. Box 908
Bloomington, IN 47402
Phone: (812) 876-2021 • Online: www.hepn.com



The Hoosier Energy Power Network

Bartholomew County REMC • Clark County REMC • Daviess-Martin County REMC • Decatur County REMC • Dubois REC • Harrison REMC • Henry County REMC • Jackson County REMC • Johnson County REMC • Orange County REMC • RushShelby Energy • South Central Indiana REMC • Southeastern Indiana REMC • Southern Indiana Power • Utilities District of Western Indiana REMC • Wayne-White Counties Electric Cooperative • WIN Energy • Whitewater Valley REMC

ENGAGE + ENLIGHTEN = EDUCATION CENTER



Can't make it to the education center?

We can come to your school. On-site visits, in conjunction with Freshwater Fred's lending library, are valuable resources we have available. For more information, contact an Education Coordinator at (812) 876-0532 or by e-mail at: freshfred@hepn.com.

Contact us today!

Phone:
(812) 876-0532
e-mail:
freshfred@hepn.com
URL:
[www.hepn.com/
environmental
education.asp](http://www.hepn.com/environmental/education.asp)

Recycled content

This brochure has been printed on 100 percent post-consumer recycled paper using soy-based ink.

What can students learn at the center?

As soon as students enter the Environmental Education Center they will begin an engaging and interactive experience. Students have the opportunity to learn the following:

- Air, water quality testing
- Aquatic biology
- Chemistry
- Renewable energy
- Conservation and waste reduction
- Energy and fossil fuels
- Geology
- Lake ecosystems
- Recycling
- Wildlife preservation
- Zoology
- Physics
- Geography



VARIETY OF TOPICS AVAILABLE TO ENGAGE YOUR STUDENTS



Teaching materials are available for Midwest educators

The Freshwater Fred lending library includes approximately 2,000 educational videos, software programs and curriculum materials appropriate for all ages. Items from the library are available to educators in Indiana, Illinois, Kentucky, Michigan, Ohio and Wisconsin for 30-days with a 10 item limit.

There is no charge for borrowing lending library materials. Log on to www.hepn.com/library/content to learn more about the program and to search the library catalog.



Who is Freshwater Fred?

Freshwater Fred is the mascot for the Hoosier Energy Education Center. Fred has been helping students understand the importance of the environment for more than 20 years.

Getting to the education center

The education center is located at the southern tip of Turtle Creek Reservoir in Sullivan County, Indiana. If you need help finding the facility, call (812) 356-4291.

From the north

Take U.S. 41 south to the Old 54 intersection. Since the intersection is not labeled, look for the New Lebanon sign on the side of the road and turn right at the flashing yellow light. Continue on W. Old 54 and follow the road as it angles left past the entrance to the Merom Generating Station.

The entrance to the education center will be a gravel driveway on the right side of the road.

From the south

Take U.S. 41 north to the Old 54 intersection. Since the intersection is not labeled, look for the New Lebanon sign on the side of the road and turn left at the flashing yellow light. Continue on W. Old 54 and follow the road as it angles left past the entrance to the Merom Generating Station.

The entrance to the education center will be a gravel driveway on the right side of the road.

